



# **RailConnect Internet Installation Guide**

September 2011

# Table of Contents

<b>System Requirements .....</b>	<b>3</b>
<b>Installing RailConnect on the Internet .....</b>	<b>5</b>
<b>Setting Up a Printer .....</b>	<b>7</b>
General Tab .....	9
TCP/IP Tab .....	10
Printer Tab .....	11
Security Tab .....	13
Regional Tab .....	13
Signon Tab .....	14
<b>Disconnecting a Printer Session .....</b>	<b>16</b>
<b>Un-installing Railconnect on the Internet .....</b>	<b>17</b>

# System Requirements

You can access RailConnect TMS/RMS/CA directly from a web browser. Because the system uses Active X, you must use Internet Explorer as your browser. RailConnect is not accessible using Firefox or Netscape.

You will need to have the following ports open through your firewall:

<u>Port</u>	<u>Purpose</u>
<b>80</b>	Web (usually opened by default)/non-SSL http
<b>443</b>	Web SSL (usually opened by default)
<b>992</b>	SSL telnet
<b>9470</b>	License Check/SSL newlook license port

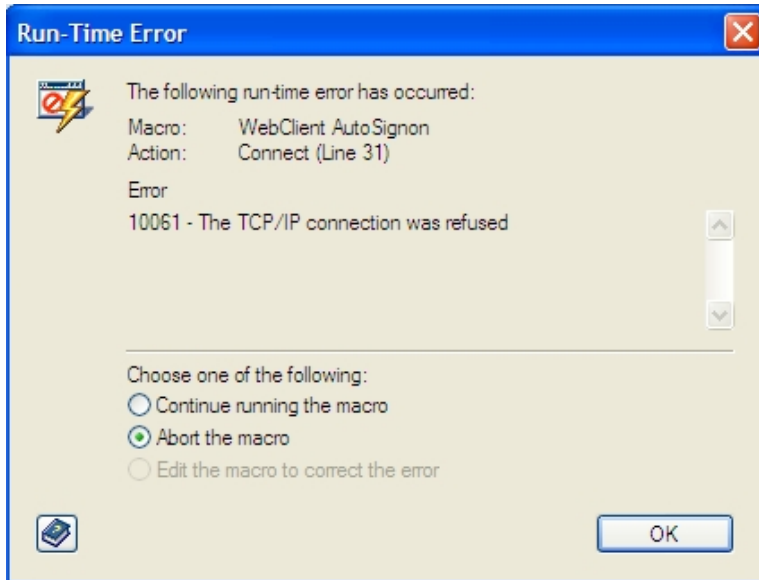
All ports must be open to the subnets 204.10.22.0/24 and 208.67.24.0/22. The subnets cover the various servers used for railconnect.com at the production and disaster recovery data centers.

You should make the following adjustments to your internet settings before installation:

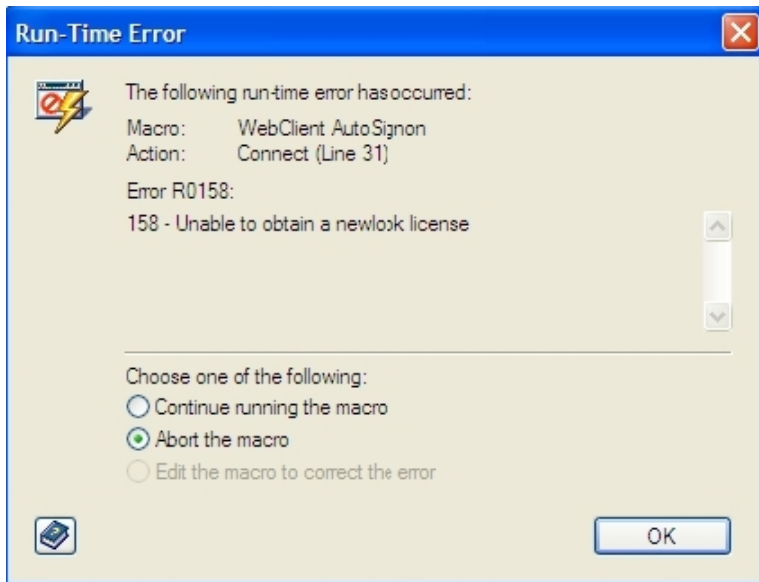
<i>Add our sites to your Trusted Sites list</i>	<ol style="list-style-type: none"><li>1. Choose <b>Tools – Internet Options – Security.</b></li><li>2. Click on <b>Trusted Sites</b>, then <b>Sites</b>. Enter <i>*.railconnect.com</i> and make sure <b>Require service verification https:</b> box is NOT checked.</li></ol>
<i>Turn off any pop-up blockers</i>	<ol style="list-style-type: none"><li>1. Choose <b>Tools – Pop-up Blockers.</b></li><li>2. Make sure blocker is OFF.</li></ol>
<i>Allow cookies from our domain</i>	<ol style="list-style-type: none"><li>1. Choose <b>Tools – Internet Options – Privacy – Sites.</b></li><li>2. Enter <i>*.railconnect.com</i> and click <b>All</b>.</li></ol>

## Error Messages

If port **992** is not open, you will get the following error:



If port **9470** is not open, you will get the following error:



# Installing RailConnect on the Internet

To set up RailConnect for use via the internet:

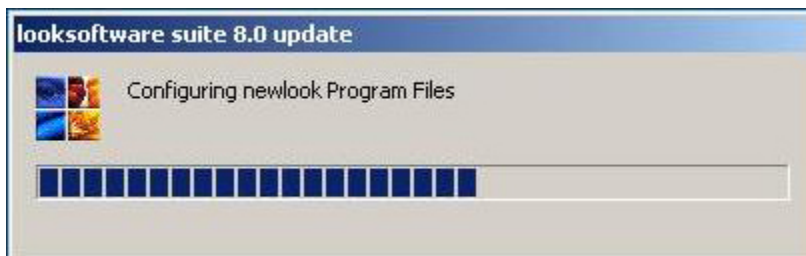
3. Open an Internet Explorer window and enter the following link:

<http://xxxx.railconnect.com/newlook/index.html>

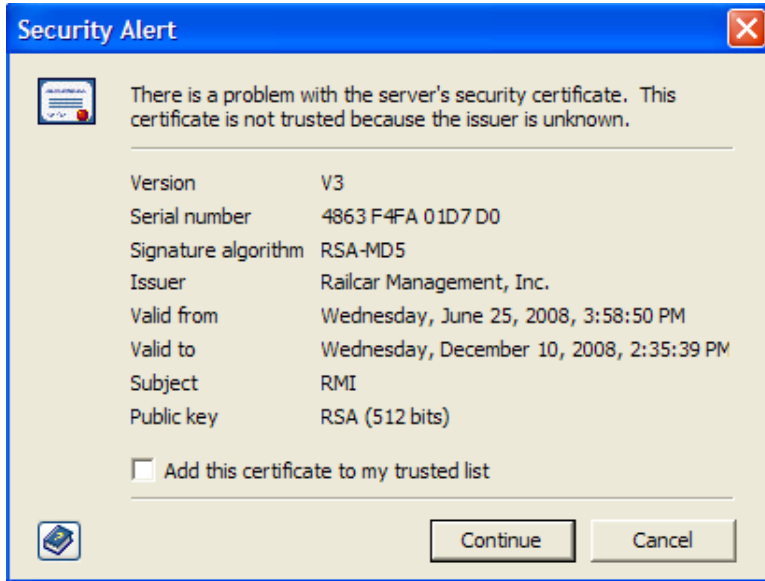
where **xxxx** = your road mark (for example, you would enter <http://fmrc.railconnect.com/newlook/index.html> for the FMRC - Farmrail Corporation.)



4. Once you have selected the web client size, the installation process begins. You should see a small window that shows a progress bar. The progress bar will reset with each installation step.



Once all the configuration steps have completed, the **Security Alert** window appears.



Check the **Add this certificate to my trusted list** box, then click **Continue**. The **RailConnect Login** window appears, and you may log in using your RailConnect ID and password.

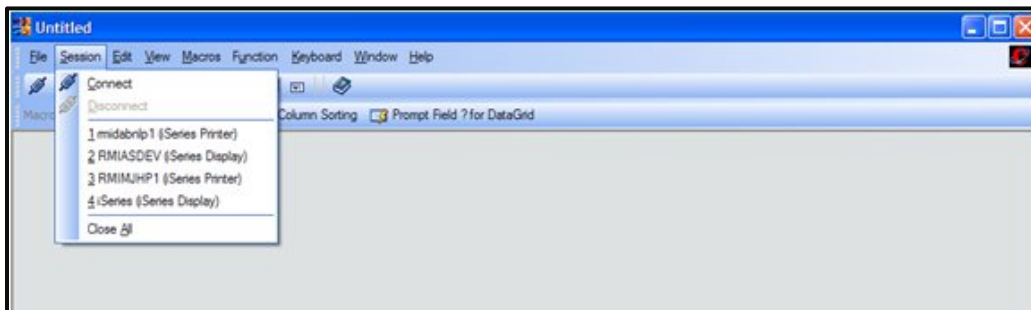
# Setting Up a Printer

The RailConnect internet printer is set up from the *liteclient* window.

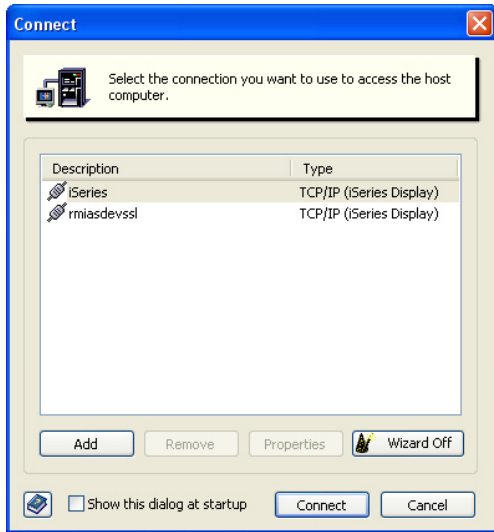
**Note:** Prior to setting up a printer, make sure that it is already your Windows default printer.

**To set up your RailConnect printer for internet access:**

1. On the *Untitled* window, select **Connect** from the **Sessions** drop-down menu or click on the **Connect** icon in the top left corner of the window.

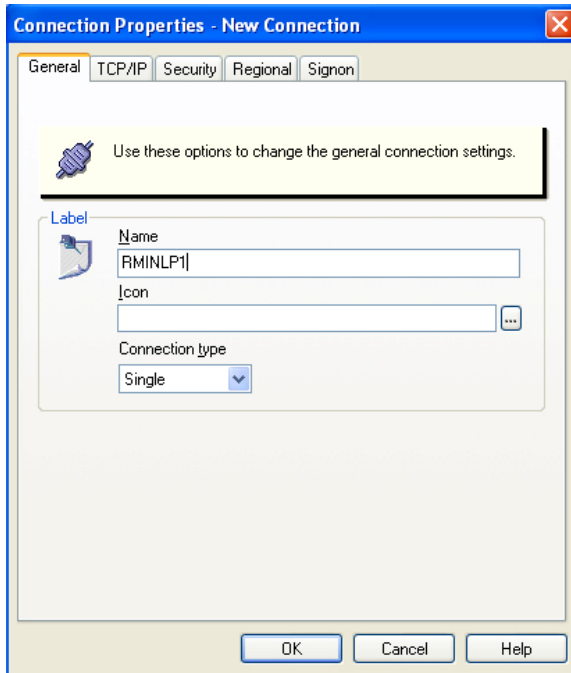


5. On the *Connect* window,
  - highlight **iSeries – TCP/IP (iSeries Display)**
  - make sure the **Wizard Off** button appears (rather than the **Wizard On** button)
  - click on the **Add** button.



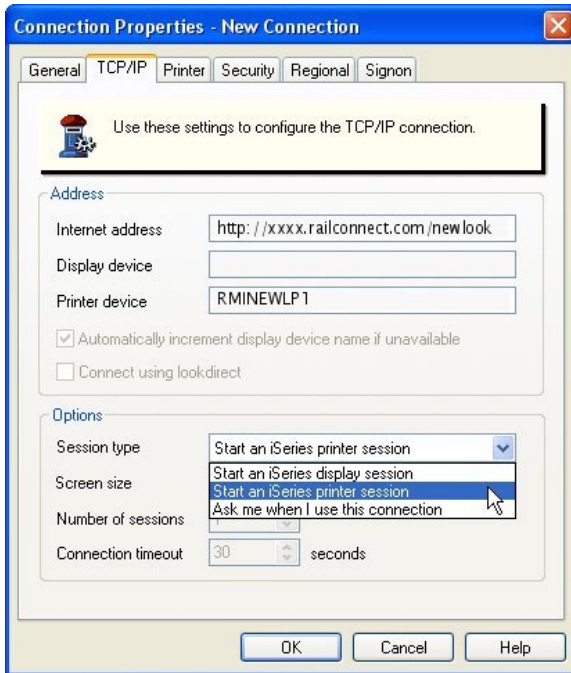
6. On the **Connection Properties** window, enter these values on each of the following tabs:

## General Tab



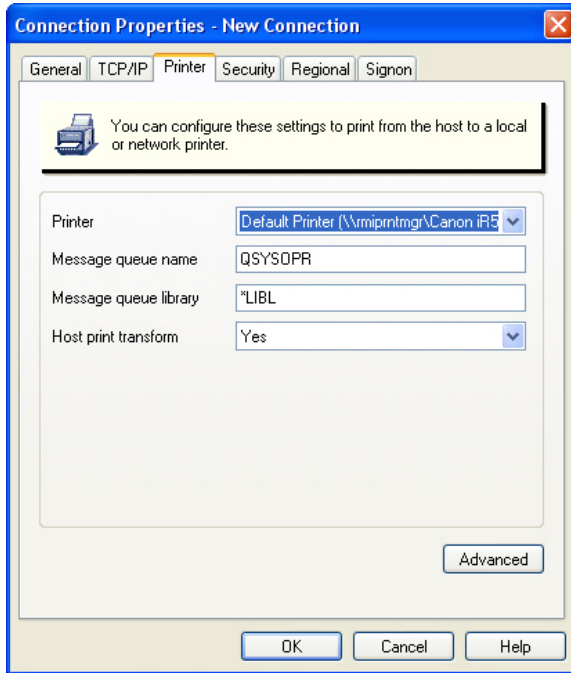
<i>Name</i>	Your printer/outqueue (example: RMINLP1). <b>Note:</b> Make sure the name you select has not already been used.
<i>Icon</i>	Blank
<i>Connection type</i>	<b>Single</b>

## TCP/IP Tab



<i>Internet address</i>	Beginning of your network link (example: rmi.railconnect.com) The xxx is indicative of the DNS Entry, or the prefix to the userid.
<i>Options: Session type</i>	<b>Start an iSeries printer session</b>
<i>Printer device</i>	Your printer/outqueue (example: RMINEWLP1). <b>Note:</b> This should match what you entered on the General tab.

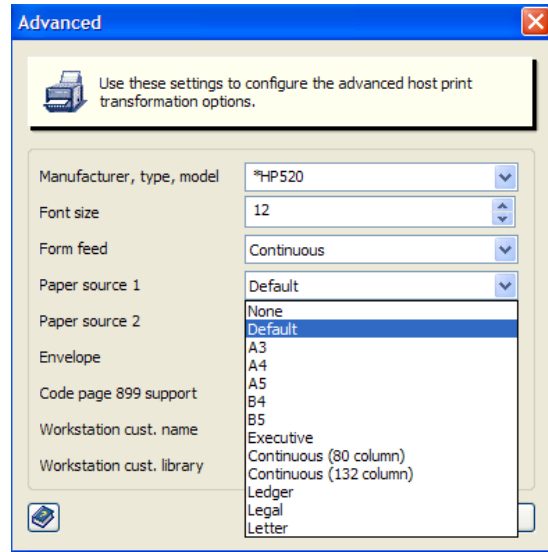
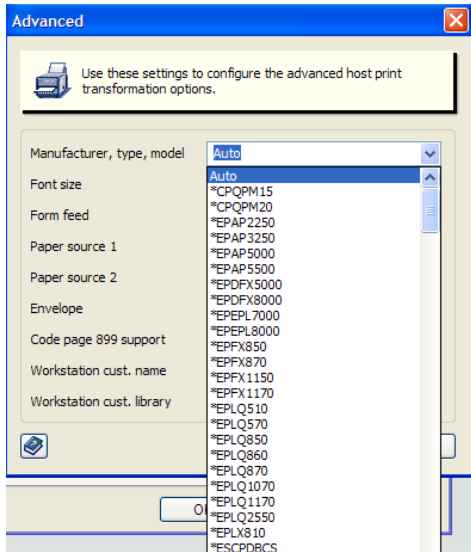
## Printer Tab



<i>Printer</i>	The printer designated as your Windows default printer will be automatically selected. If you want to use a different printer that is available to your PC, click on the drop-down arrow and select that printer.
<i>Host print transform</i>	<b>Yes</b>

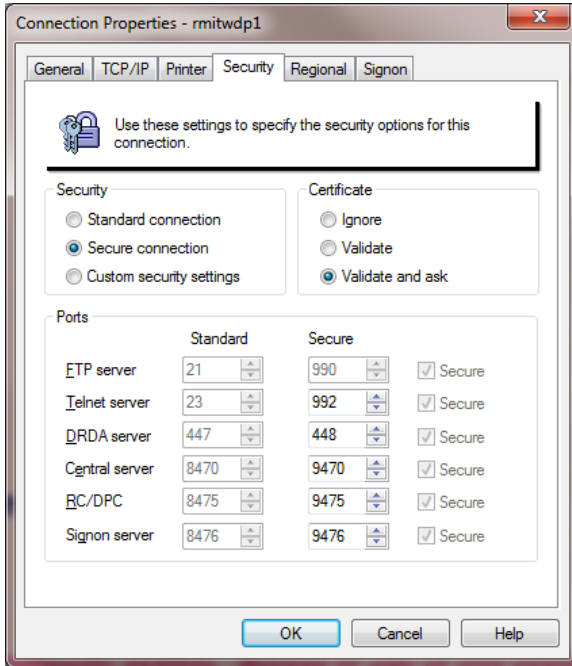
## Advanced (Printer)

Click on the **Advanced** button. Enter the following values, then click **OK**.



<i>Manufacturer, type, model</i>	Use the drop down list to select the model that corresponds to your printer. If the model does not appear on the list, contact RMI Technical Support at 404-351-0349 for assistance.
<i>Paper Source 1</i>	<b>Letter</b>

# Security Tab



<i>Security</i>	Select <b>Secure connection</b>
<i>Certificate</i>	Select <b>Validate and ask</b>
<i>Ports</i>	Settings are as follows:  FTP server – 21 standard and 990 Secure Telnet server – 23 standard and 992 Secure DRDA server – 447 standard and 448 Secure Central server – 8470 standard and 9470 Secure RC/DPC – 8475 standard and 9475 Secure Signon server – 8476 standard and 9476 Secure

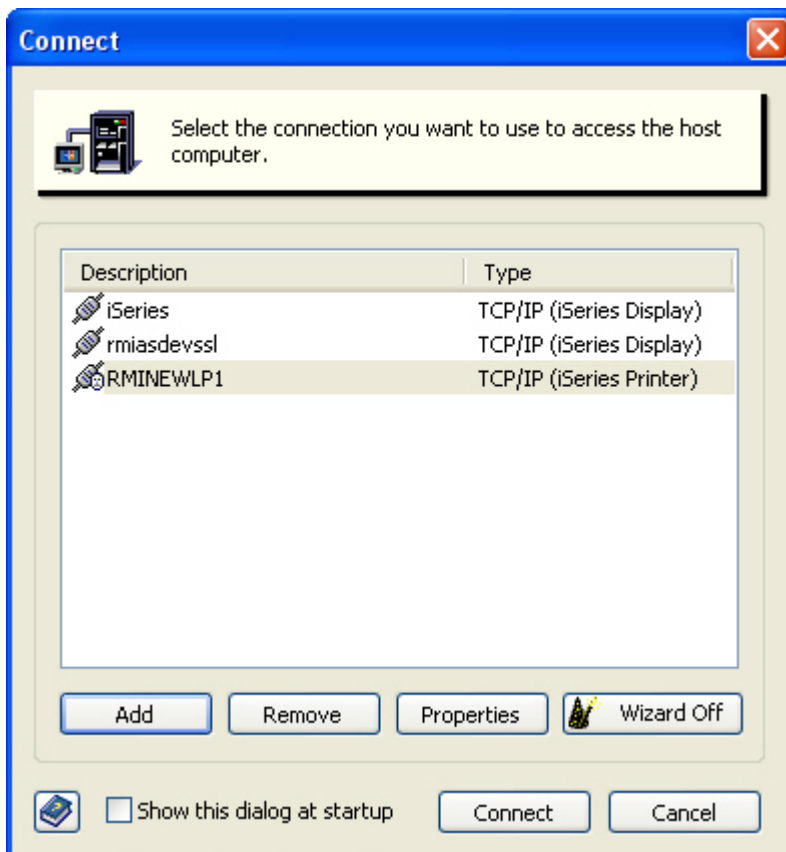
## Regional Tab

Retain the default values.

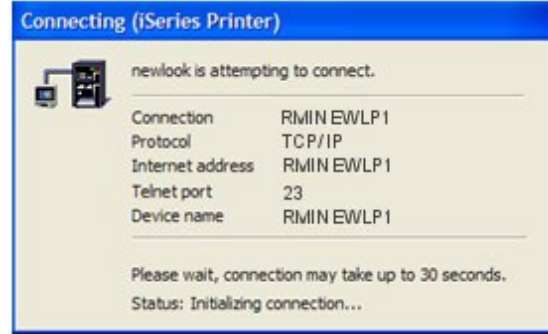
## Signon Tab

Retain the default values.

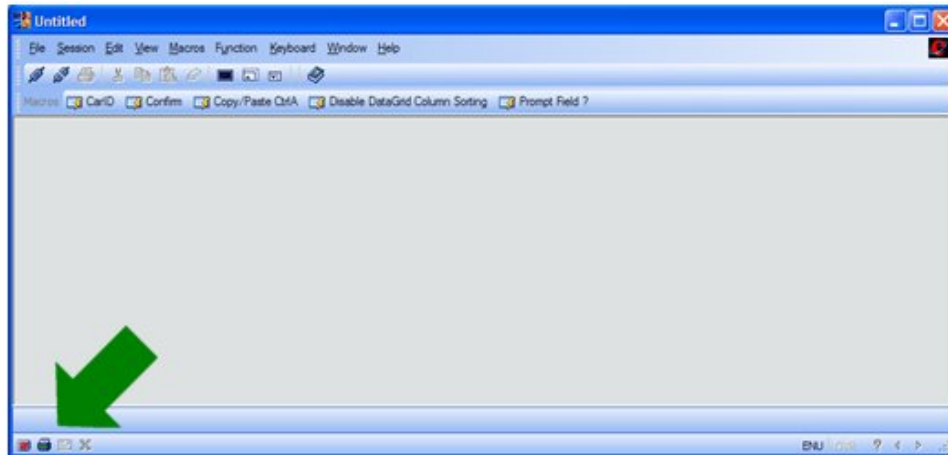
7. Once you are done with all the settings, click **OK**. The *Connect* window appears, showing the printer you just configured.
8. Highlight the iSeries printer that you just configured and click **Connect**.



9. On the *Signon* window, enter your RMI user name and password, then click **OK**. The printer will connect to the RMI system.



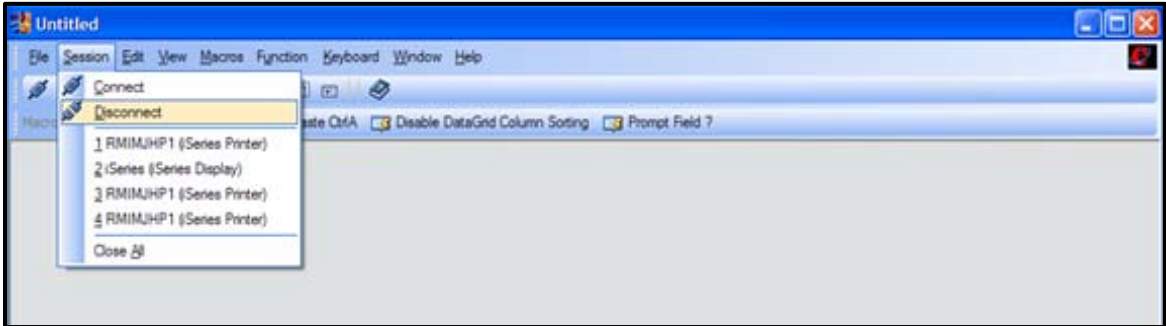
Once connected, you will see the printer icon in the bottom left corner of the Untitled window. If the printer is connected, the printer icon will show **Green** or **Blue**. If the printer is not connected, the printer icon will show **Red**.



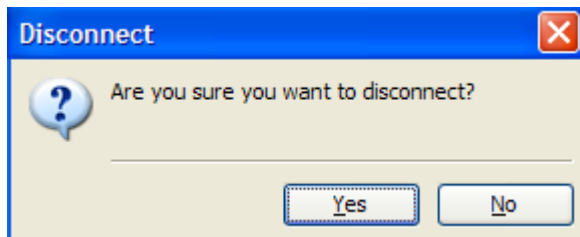
# Disconnecting a Printer Session

To end a printer session:

1. On the *Untitled* window, select **Disconnect** from the **Sessions** drop-down menu or click on the **Disconnect** icon in the top left corner of the window.



10. On the **Disconnect** verify window, select **Yes**.



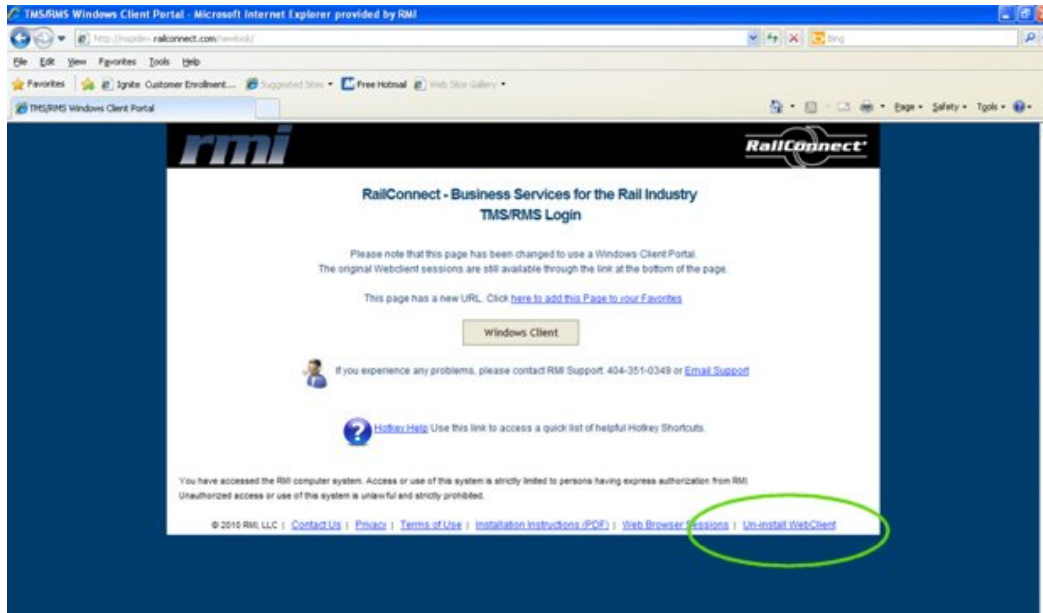
This will now disconnect the printer session, and the printer icon in the bottom left corner will now show **Red**. You can then close the *Untitled* window by clicking on the **X** in the upper right corner.

# Un-installing Railconnect on the Internet

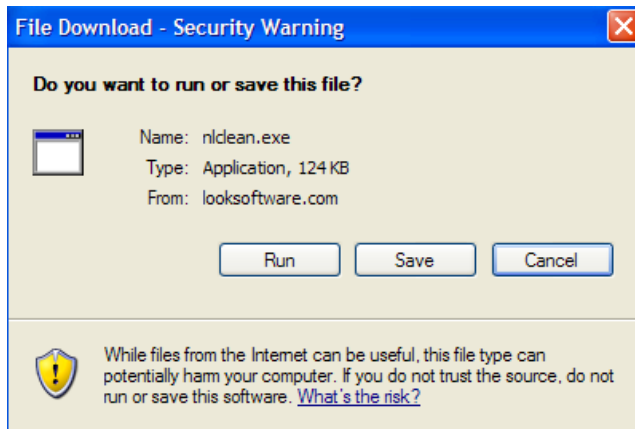
If RailConnect does start up correctly on the internet, you may need to un-install the application, then re-install.

**To un-install RailConnect via the internet:**

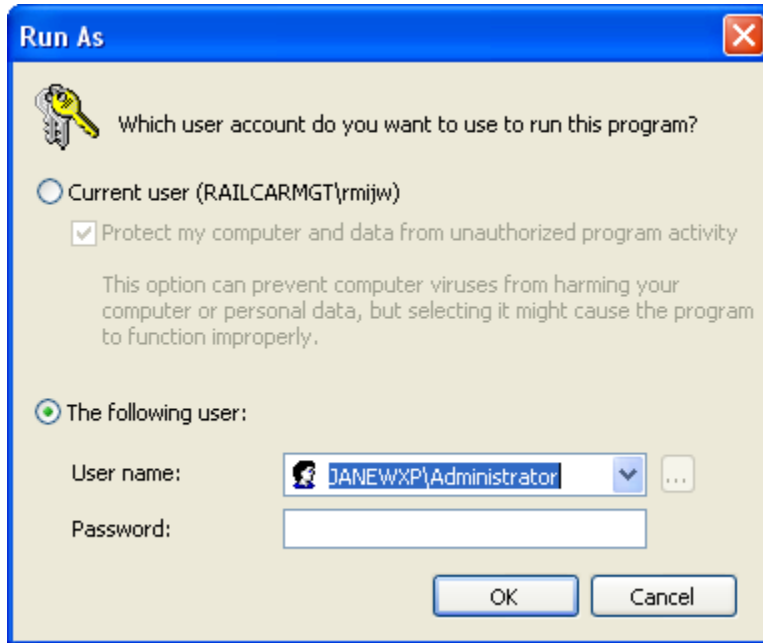
1. Click on **Un-install WebClient** at the bottom right of the **TMS/RMS Login** window.



11. On the *File Download – Security Warning* window, click **Save** to save to your C: drive..



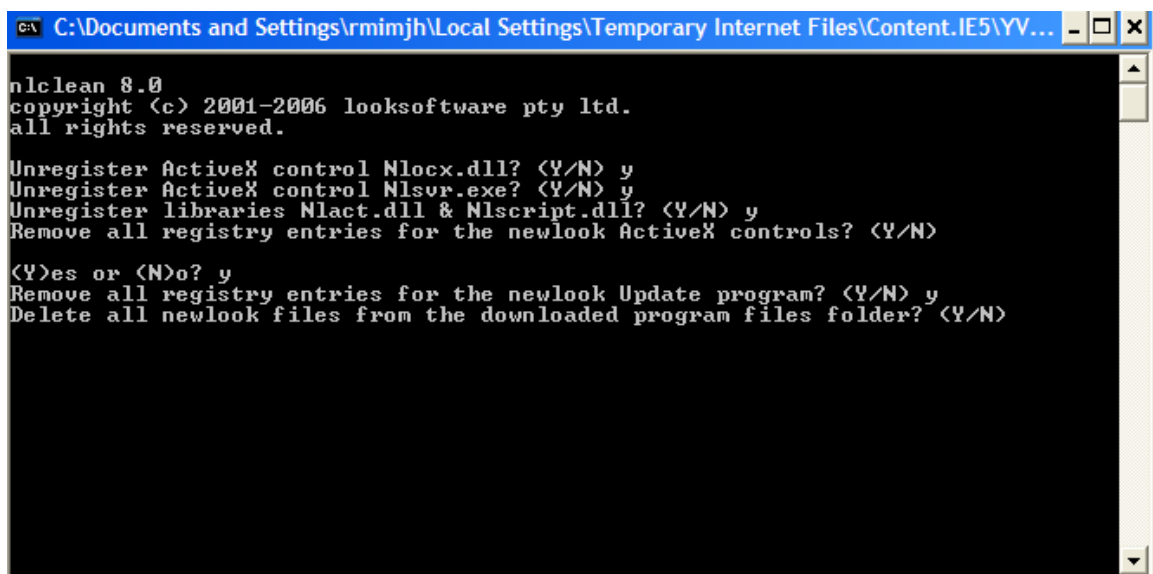
12. Navigate to your C: drive, then right click on the file name. Select **Run as**.



13. If your operating system is *Windows XP*, select **Current User**. If your operating system is *Windows Vista* or *Windows 7*, select **The following user**, highlight your administrator *User name*, and enter your administrator *Password*.

14. Select **OK**.

15. On the **DOS** window, you will reply **Y** to all the prompts:



Reply **Y** to *Unregister ActiveX control Nlocx.dll?*

Reply **Y** to *Unregister ActiveX control Nlsrv.exe?*

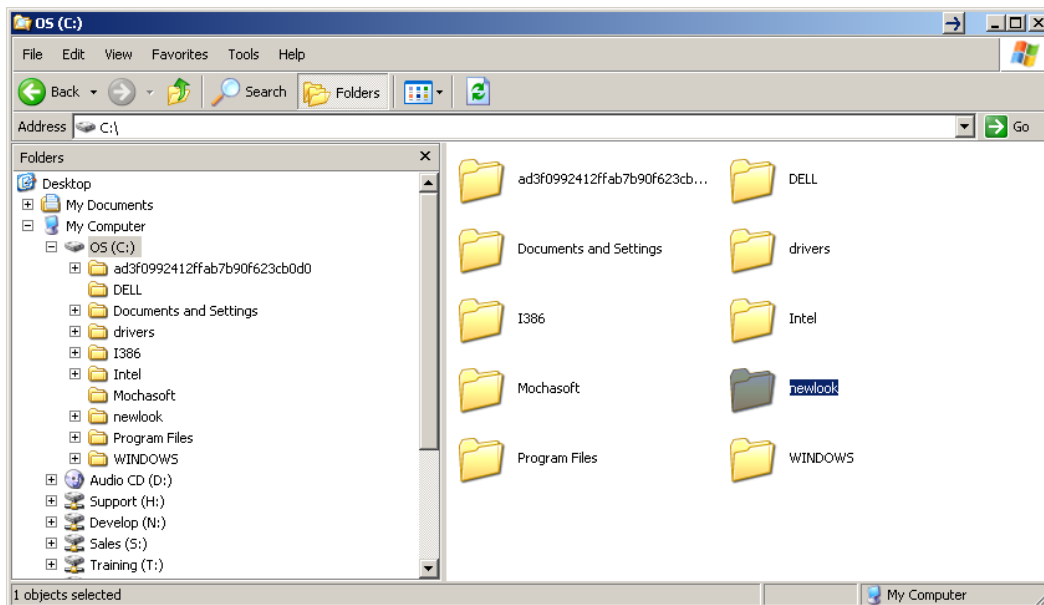
Reply **Y** to *Unregister libraries Nlact.dll & Nlscript.dll?*

Reply **Y** to *Remove all registry entries for the newlook ActiveX controls?*

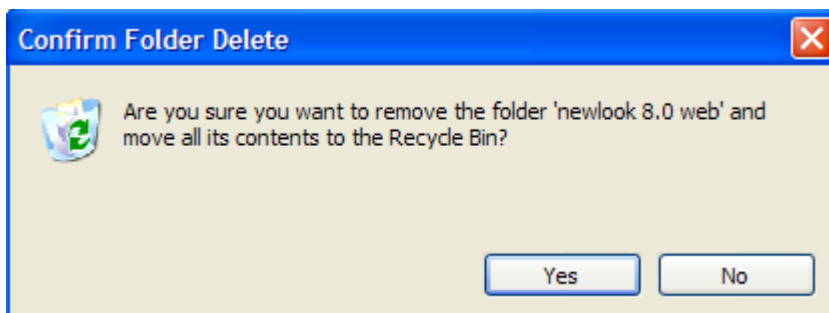
Reply **Y** to *Remove all registry entries for the newlook Update program?*

Reply **Y** to *Delete all newlook files from the downloaded program files folder?*

16. At this time the DOS window will disappear. Go to the **C:\** drive on your PC and **Delete** the *newlook* folder.



17. On the **Confirm Folder Delete** verify window, click **Yes**.



18. Close all Windows applications and reboot the PC/laptop. You should now be able to re-install RailConnect for the internet by repeating the steps in [Installing RailConnect on the Internet](#).